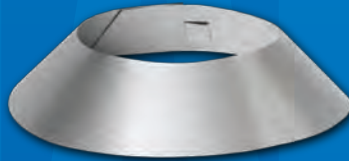


# 4CGSWVVK VERTICAL VENT KIT, CATEGORY II, III, & IV APPROVED!

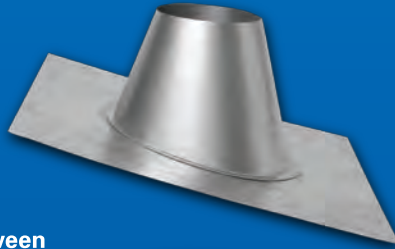
## VERTICAL CAP



## STORM COLLAR



## FLASHING 2/12 THROUGH 5/12 PITCH



Install vent pipe between  
drain section and cap (not  
included in kit)

## VERTICAL DRAIN SECTION



Drain: 1/2" hose  
required (not  
included in kit)

## DOUBLE GASKET APPLIANCE ADAPTER



- GOLD GASKET
- BACK FLOW PREVENTER
- GRAY GASKET
- GEAR CLAMP

## 4CGSWVVK

One part number, one vertical  
vent kit for Category II, III, IV  
appliances.

- UL Listed to 1738
- Seamless gasket
- Listed for 10" positive pressure
- Liquid tight
- No RTV or sealant required; no waiting 24 hours to run test
- Click-together connections
- AL29-4C Stainless Steel

PART NO.	DESCRIPTION	CARTON QTY.	WEIGHT	CUBE
4CGSWVVK	4" Vertical Vent Kit	1	8.45 lbs	1.40



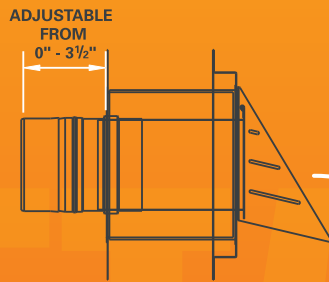
800-835-2830

P.O. BOX 1138 • WICHITA, KANSAS 67201

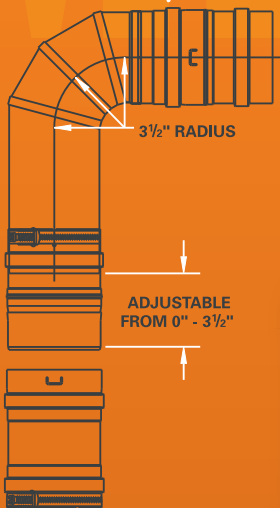
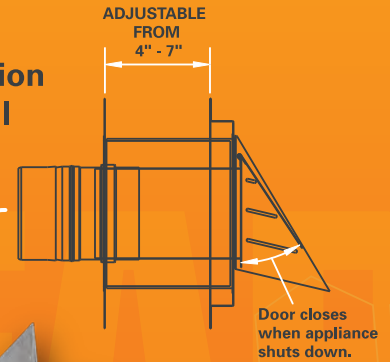
(316) 943-2351 • Fax (316) 771-4154 • e-mail: info@metal-fabinc.com • www.metal-fabinc.com

# 3" AND 4" HORIZONTAL VENT KITS, CATEGORY II, III, & IV APPROVED!

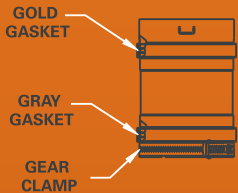
Adjustable length  
on horizontal run.



Horizontal termination  
with adjustable wall  
thimble.



Short radius elbow  
adjustable length  
on vertical run.



Appliance adapter  
with two gaskets  
and gear clamp.  
Note: 3" Kit does not  
include an appliance  
adapter.



Standard  
Corr/Guard®  
snap-lock  
connections.

## 3CGSWHVK/4CGSWHVK

- UL Listed to 1738
- AL29-4C Stainless Steel
- Liquid and gas tight without tape or sealant.
- Gaskets are molded so there is no seam for leaks to occur or tear apart.
- Standard small diameter Corr/Guard® (3", 4", and 5") connections click together for easy installation.

PART NO.	DESCRIPTION	CARTON QTY.	WEIGHT	CUBE
3CGSWHVK	3" Horizontal Vent Kit	1	8.45 lbs	1.40
4CGSWHVK	4" Horizontal Vent Kit	1	8.45 lbs	1.40



800-835-2830

P.O. BOX 1138 • WICHITA, KANSAS 67201

(316) 943-2351 • Fax (316) 771-4154 • e-mail: info@metal-fabinc.com • www.metal-fabinc.com

Form No. L2402-6/08