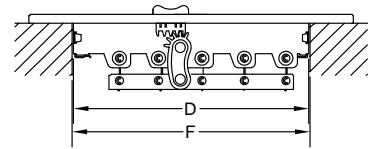
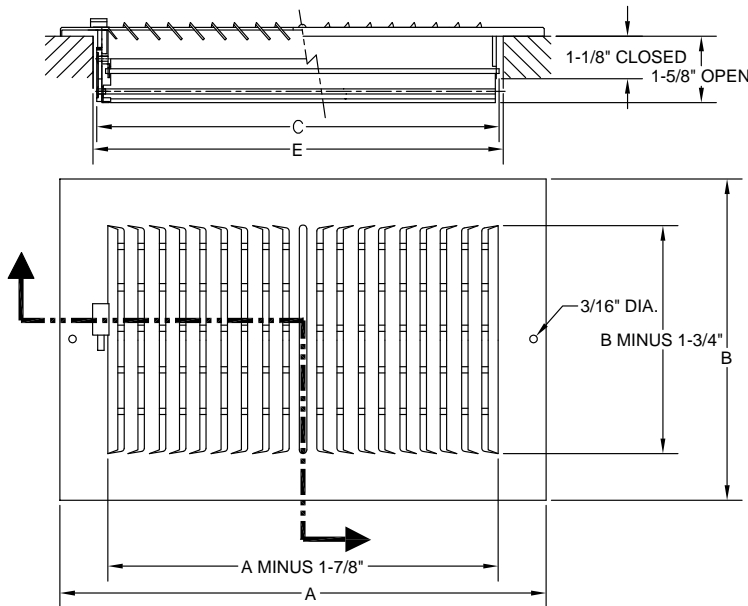




MF3SCR_W2 SERIES 2-WAY SIDEWALL CEILING REGISTER 1/3" SPACED SPECIFICATION CHART



- **1/3" Spaced Louvers**
- **Heavy Gauge Steel Construction**
- **Integral Multi-Shutter Damper**
- **2 - Way Deflection**
- **Finish: White**

2-Way Sidewall/Ceiling Register 1/3" Spaced Dimensional Chart

Size (ExF)	Dimensions (See Detail Sketches)				Size (ExF)	Dimensions (See Detail Sketches)			
	A	B	C	D		A	B	C	D
6x6	7-1/4	7-1/4	5-7/8	5-5/8	12x6	13-1/4	7-1/4	11-7/8	5-5/8
8x8	9-1/4	9-1/4	7-7/8	7-5/8	12x8	13-1/4	9-1/4	11-7/8	7-5/8
10x4	11-1/4	5-1/4	9-7/8	3-5/8	14x6	15-1/4	7-1/4	13-7/8	5-5/8
10x6	11-1/4	7-1/4	9-7/8	5-5/8	14x8	15-1/4	9-1/4	13-7/8	7-5/8
12x4	13-1/4	5-1/4	11-7/8	3-5/8					

2-Way Sidewall/Ceiling Register 1/3" Spacing

Face Velocity		300	400	500	600	700	800	900	1000
Pressure Loss (In H ₂ O)		0.008	0.012	0.016	0.024	0.032	0.044	0.052	0.064
6x6	cfm	40	50	65	75	90	100	115	130
Ak .13	throw (ft)	5.0	6.0	8.0	9.0	11.0	13.0	14.0	16.0
8x8	cfm throw	80	105	130	155	185	210	235	260
Ak .26	(ft)	7.0	9.0	11.0	14.0	16.0	18.0	21.0	23.0
10x4	cfm throw	45	60	75	85	100	115	130	145
Ak .15	(ft)	5.0	6.5	7.5	9.0	11.5	13.0	14.0	16.0
10x6	cfm	75	100	125	145	170	195	220	245
Ak .25	throw (ft)	6.0	7.5	10.0	11.0	14.0	15.5	18.0	20.0
12x4	cfm	55	70	90	110	125	145	160	180
Ak .18	throw (ft)	5.5	7.0	8.5	10.0	12.5	14.0	16.0	17.5
12x6	cfm	90	120	150	175	205	235	265	295
Ak .30	throw (ft)	6.5	8.0	11.0	12.5	15.0	17.5	19.0	22.0
12x8	cfm	130	175	220	260	305	350	395	435
Ak .44	throw (ft)	8.0	11.0	14.0	16.0	19.0	22.0	25.0	27.0
14x6	cfm	110	145	180	215	250	290	325	360
Ak .36	throw (ft)	7.0	9.0	12.0	13.5	16.5	18.5	21.0	24.0
14x8	cfm	155	205	260	310	360	410	465	515
Ak .52	throw (ft)	8.0	10.0	14.0	15.5	19.5	22.0	24.5	28.0