



MODEL: MCCD CURTAIN CEILING RADIATION DAMPER SQUARE AND RECTANGULAR



UL CLASSIFIED
(SEE COMPLETE
MARKING ON PRODUCT)



MODEL MCCD: UL 555C Listed for 3-4 hours. (ULC - S112.2)
Square or rectangular damper with quilted ceramic thermal blanket, (non-asbestos).

STANDARD CONSTRUCTION:

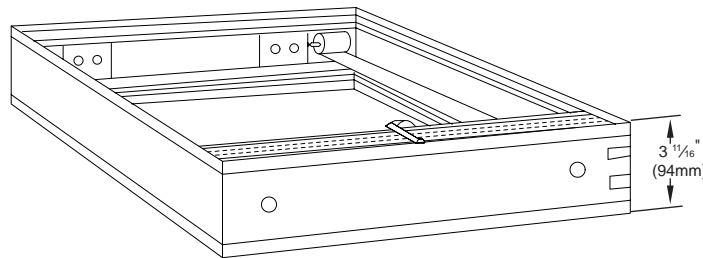
Frame: Roll formed, 22 Ga. galvanized steel.
Blades: Roll formed, 24 Ga. galvanized steel.
Thermal Blanket: Non-asbestos, ceramic blanket.
Springs: Stainless steel.
Finish: Mill galvanized.

OPTIONS:

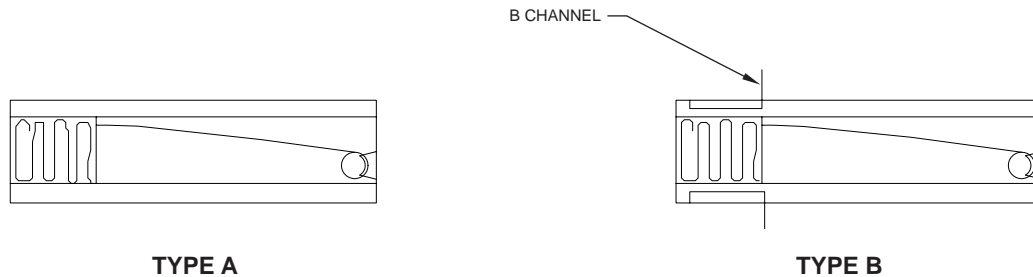
Type B: B channels installed (see below).
Fusible Link: Replaceable 165°F, 212°F.
Thermal Blanket: TB5000 24" x 24" x 1/8", non-asbestos, ceramic blanket.

SIZE LIMITATIONS:

Minimum: 4.00" W or 4.25" H.
Minimum area: 24 sq. inch (nominal).
Maximum 23.75" W x 23.75" H



MODELS



TYPE A

TYPE B

SUGGESTED SPECIFICATION

Square and rectangular curtain ceiling dampers shall be Model MCCD by Metal-Fab. Ceiling dampers shall bear the Underwriters' Laboratories label and be rated for ducted (MCCD) air systems. Ceiling damper blanket shall be of the non-asbestos, curtain type for maximum free area. Ceiling damper shall be furnished with a fusible link.

Project:	Contractor:
Location:	Address:
Architect:	P.O. Number:
Engineer:	Date: