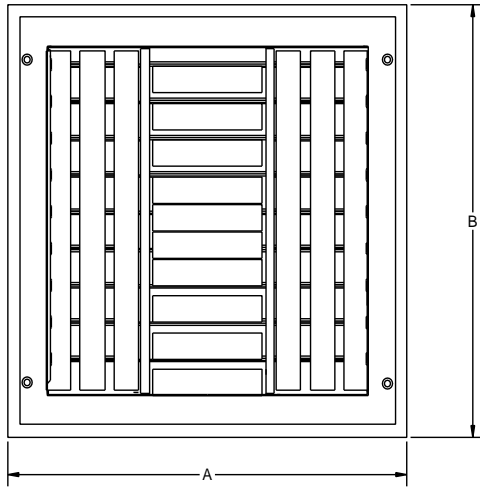
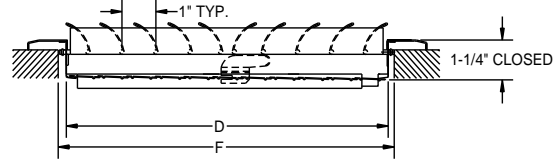
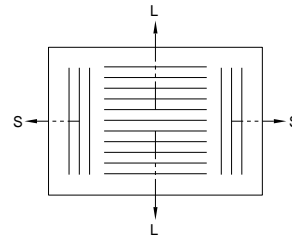




# MFACRA-W4 SERIES ALUMINUM CURVED BLADE 4-WAY REGISTER SPECIFICATION CHART



- For Sidewall or Ceiling Application
- Heavy Gauge Steel Construction
- Integral Multi-Shutter Damper
- Adjustable Curved Blades
- 4-Way Deflection & Air Pattern
- Finish: White



Aluminum Curved S/C Adjustable Register 4-Way Dimensional Chart

Size (ExF)	Dimensions (See Detail Sketches)				Size (ExF)	Dimensions (See Detail Sketches)			
	A	B	C	D		A	B	C	D
6x6	7-3/4	7-3/4	5-3/4	5-3/4	12x12	13-3/4	13-3/4	11-3/4	11-3/4
8x8	9-3/4	9-3/4	7-3/4	7-3/4	14x14	15-3/4	15-3/4	13-3/4	13-3/4
10x10	11-3/4	11-3/4	9-3/4	9-3/4					

Aluminum Curved S/C Adjustable Register 4-Way

Face Velocity		400	500	600	700	800	900	1000	1100	1200
<b>Pressure Loss</b>		0.012	0.016	0.024	0.032	0.040	0.052	0.064	0.076	0.092
<b>6x6</b> Ak .12	cfm	55	75	90	100	110	130	140	155	175
	Throw	9/18 3/4	15/25 4/5	23/35 4/6	26/38 5/6	26/41 6/7	27/45 7/8	28/48 7/9	29/49 8/11	31/55 8/12
<b>8x8</b> Ak .20	cfm	90	120	130	165	190	200	225	235	270
	Throw	19/21 4/4	23/28 4/5	28/32 5/6	33/40 6/7	37/43 6/7	42/51 7/8	47/53 8/9	53/61 9/11	68/77 9/10
<b>10x10</b> Ak .28	cfm	130	150	190	215	245	280	320	340	365
	Throw	28/47 4/5	38/57 4/6	47/68 6/7	49/79 7/8	49/89 6/8	55/96 8/9	64/112 9/11	68/121 9/12	79/134 12/13
<b>12x12</b> Ak .38	cfm	160	215	250	270	315	350	390	440	475
	Throw	31/64 4/6	36/78 5/7	47/99 6/8	53/117 7/9	58/124 8/9	64/148 9/10	68/169 9/12	79/178 11/13	88/184 11/16
14x14 Ak .52	cfm	230	290	330	385	445	480	560	590	665
	Throw	49/98 5/6	56/112 6/7	53/132 6/9	69/151 7/10	65/169 7/11	79/187 9/13	89/193 10/16	94/243 12/17	99/244 13/18

Terminal Velocity of 75 fpm, Pressure Loss (in H2O) & Throw (ft)