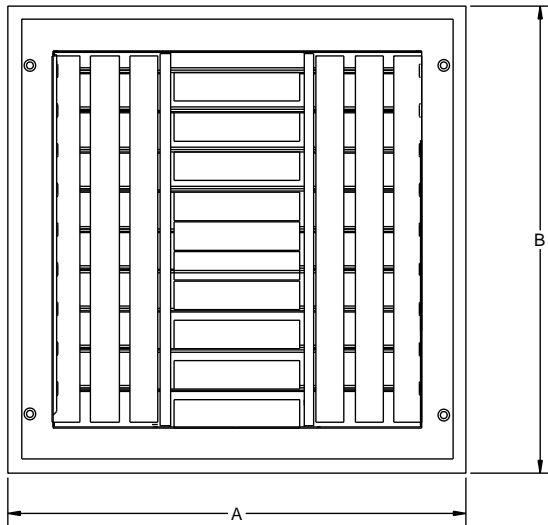
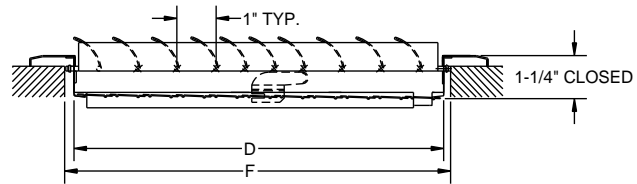
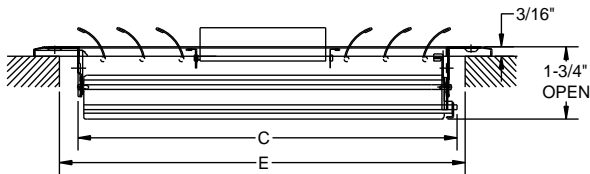
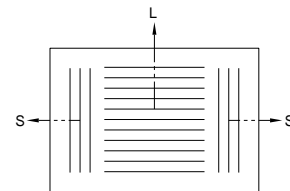




# MFACRA-W3 SERIES ALUMINUM CURVED BLADE 3-WAY REGISTER SPECIFICATION CHART



- For Sidewall Or Ceiling Application
- Aluminum Construction
- Integral Multi-Shutter Damper
- Adjustable Curved Blades
- 3-Way Deflection & Air Pattern
- Finish: White



Aluminum Curved S/C Adjustable Register 3-Way Dimensional Chart

Size (ExF)	Dimensions (See Detail Sketches)				Size (ExF)	Dimensions (See Detail Sketches)			
	A	B	C	D		A	B	C	D
6x6	7-3/4	7-3/4	5-3/4	5-3/4	12x6	13-3/4	7-3/4	11-3/4	5-3/4
8x4	9-3/4	5-3/4	7-3/4	3-3/4	12x8	13-3/4	9-3/4	11-3/4	7-3/4
8x8	9-3/4	9-3/4	7-3/4	7-3/4	12x12	13-3/4	13-3/4	11-3/4	11-3/4
10x4	11-3/4	5-3/4	9-3/4	3-3/4	14x6	15-3/4	7-3/4	13-3/4	5-3/4
10x6	11-3/4	7-3/4	9-3/4	5-3/4	14x8	15-3/4	9-3/4	13-3/4	7-3/4
10x10	11-3/4	11-3/4	9-3/4	9-3/4	14x14	15-3/4	15-3/4	13-3/4	13-3/4

Aluminum Curved S/C Adjustable Register 3-Way										
Face Velocity		400	500	600	700	800	900	1000	1100	1200
Pressure Loss		0.012	0.016	0.024	0.032	0.040	0.052	0.064	0.076	0.092
<b>6x6</b> <b>Ak .14</b>	cfm	60	70	85	100	115	130	145	160	175
	cfm L/S Throw L/S	10/15 3/4	12/18 4/5	16/22 5/6	18/25 6/7	21/28 6/8	22/31 7/8	25/36 8/8	27/38 8/9	31/42 8/10
<b>8x4</b> <b>Ak .13</b>	cfm	55	65	80	95	105	120	130	145	160
	cfm L/S Throw L/S	10/14 3/4	12/18 4/5	16/21 5/6	18/25 6/7	20/28 6/8	22/30 7/8	25/36 7/8	26/38 8/9	31/41 8/9
<b>8x8</b> <b>Ak .23</b>	cfm	90	115	140	160	185	205	230	255	275
	cfm L/S Throw L/S	41/24 5/4	51/31 6/5	63/36 8/6	69/41 8/7	78/47 10/8	89/55 11/9	99/59 12/10	109/66 14/12	119/72 15/13
<b>10x4</b> <b>Ak .15</b>	cfm	65	80	95	110	125	140	155	170	190
	cfm L/S Throw L/S	11/15 3/4	13/19 4/5	17/21 5/7	18/26 6/7	21/28 7/8	22/30 7/8	26/36 8/8	26/39 8/10	32/41 9/11
<b>10x6</b> <b>Ak .22</b>	cfm	85	110	130	150	175	195	220	240	260
	cfm L/S Throw L/S	29/27 5/5	37/33 6/5	44/38 7/6	50/46 7/7	58/51 9/8	65/59 9/9	72/64 11/10	79/72 12/12	87/79 13/12
<b>10x10</b> <b>Ak .34</b>	cfm	135	170	205	240	270	305	340	375	410
	cfm L/S Throw L/S	47/42 5/5	59/63 6/7	72/64 8/7	83/74 9/9	95/85 11/10	106/94 12/11	119/106 13/12	131/117 15/14	142/126 16/15
<b>12x6</b> <b>Ak .25</b>	cfm	100	125	155	180	205	230	255	280	305
	cfm L/S Throw L/S	28/34 4/4	36/42 5/6	42/49 6/9	49/59 7/8	54/67 8/9	63/74 9/9	70/83 10/11	77/91 11/12	84/98 11/12
<b>12x8</b> <b>Ak .32</b>	cfm	130	165	195	230	260	295	330	360	395
	cfm L/S Throw L/S	47/42 5/5	59/63 7/7	72/64 8/7	83/74 9/8	95/85 10/9	106/94 11/10	119/106 12/12	131/117 14/13	142/126 15/14
<b>12x12</b> <b>Ak .47</b>	cfm	190	235	285	330	380	425	475	520	570
	cfm L/S Throw L/S	47/56 9/11	58/68 12/12	68/79 12/13	79/89 14/15	89/103 13/14	99/115 15/16	109/127 16/17	119/139 17/18	121/152 19/19
<b>14x6</b> <b>Ak .29</b>	cfm	115	145	175	205	235	260	290	320	350
	cfm L/S Throw L/S	44/40 5/4	57/61 6/7	70/61 8/7	80/71 9/8	92/81 10/9	103/91 11/10	116/104 12/11	127/113 13/12	140/123 14/13
<b>14x8</b> <b>Ak .37</b>	cfm	150	190	225	265	300	340	375	415	450
	cfm L/S Throw L/S	42/49 4/5	53/62 6/6	63/74 7/7	74/86 8/8	84/99 9/9	95/111 10/10	106/123 11/11	116/136 12/12	127/148 14/14
<b>14x14</b> <b>Ak .63</b>	cfm	255	315	380	445	505	570	635	695	760
	cfm L/S Throw L/S	53/68 17/18	70/80 18/19	80/92 18/21	91/102 19/21	101/115 18/22	103/127 21/22	121/139 22/23	132/151 23/24	133/164 24/25

Terminal Velocity of 75 fpm, Pressure Loss (in H<sub>2</sub>O) & Throw (ft)