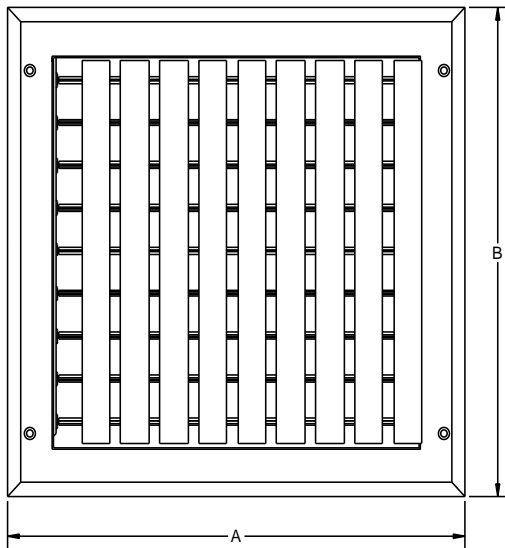
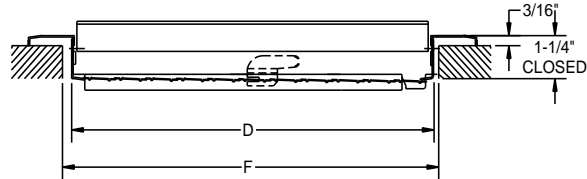
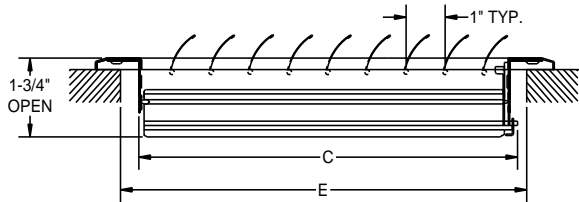




# MFACRA-W1 SERIES ALUMINUM CURVED BLADE 1-WAY REGISTER SPECIFICATION CHART



- For Sidewall or Ceiling Applications
- Aluminum Construction
- Integral Multi-Shutter Damper
- Adjustable Curved Blades
- 1-Way Deflection & Air Pattern
- Finish: White

Aluminum Curved S/C Adjustable Register 1-Way Dimensional Chart

Size (ExF)	Dimensions (See Detail Sketches)				Size (ExF)	Dimensions (See Detail Sketches)			
	A	B	C	D		A	B	C	D
6x6	7-3/4	7-3/4	5-3/4	5-3/4	10x10	11-3/4	11-3/4	9-3/4	9-3/4
8x4	9-3/4	5-3/4	7-3/4	3-3/4	12x4	13-3/4	5-3/4	11-3/4	3-3/4
8x6	9-3/4	7-3/4	7-3/4	5-3/4	12x6	13-3/4	7-3/4	11-3/4	5-3/4
8x8	9-3/4	9-3/4	7-3/4	7-3/4	12x8	13-3/4	9-3/4	11-3/4	7-3/4
10x4	11-3/4	5-3/4	9-3/4	3-3/4	14x4	15-3/4	5-3/4	13-3/4	3-3/4
10x6	11-3/4	7-3/4	9-3/4	5-3/4	14x6	15-3/4	7-3/4	13-3/4	5-3/4
10x8	11-3/4	9-3/4	9-3/4	7-3/4	14x8	15-3/4	9-3/4	13-3/4	7-3/4

**Aluminum Curved S/C Adjustable Register 1-Way**

<b>Face Velocity</b>		<b>400</b>	<b>500</b>	<b>600</b>	<b>700</b>	<b>800</b>	<b>900</b>	<b>1000</b>	<b>1100</b>	<b>1200</b>
<b>Pressure Loss</b>		<b>0.012</b>	<b>0.016</b>	<b>0.024</b>	<b>0.032</b>	<b>0.040</b>	<b>0.052</b>	<b>0.064</b>	<b>0.076</b>	<b>0.092</b>
<b>6x6</b> <b>Ak .15</b>	cfm Throw	60 6.0	75 8.0	90 10.0	105 11.0	125 12.0	140 13.0	155 15.0	170 17.0	185 19.0
<b>8x4</b> <b>Ak .10</b>	cfm Throw	40 3.0	50 5.0	60 6.0	70 7.0	80 8.0	90 9.0	100 10.0	110 11.0	120 12.0
<b>8x6</b> <b>Ak .13</b>	cfm Throw	50 4.0	65 6.0	75 8.0	90 9.0	100 10.0	115 11.0	130 12.0	140 13.0	155 14.0
<b>8x8</b> <b>Ak .23</b>	cfm Throw	90 8.0	115 10.0	140 11.0	160 13.0	185 16.0	210 17.0	230 17.0	255 22.0	275 25.0
<b>10x4</b> <b>Ak .12</b>	cfm Throw	50 4.0	60 6.0	70 7.0	85 8.0	95 9.0	110 10.0	120 11.0	130 12.0	145 13.0
<b>10x6</b> <b>Ak .22</b>	cfm Throw	90 7.0	110 9.0	130 11.0	155 12.0	175 15.0	200 16.0	220 20.0	240 21.0	265 24.0
<b>10x8</b> <b>Ak .22</b>	cfm Throw	90 6.0	110 7.0	130 9.0	155 10.0	175 12.0	200 13.0	220 14.0	240 16.0	265 18.0
<b>10x10</b> <b>Ak .33</b>	cfm Throw	130 8.0	165 11.0	200 12.0	230 14.0	265 16.0	300 18.0	330 21.0	365 23.0	395 25.0
<b>12x4</b> <b>Ak .13</b>	cfm Throw	50 4.0	65 6.0	75 8.0	90 9.0	100 10.0	115 11.0	130 12.0	140 13.0	155 14.0
<b>12x6</b> <b>Ak .20</b>	cfm Throw	80 6.0	100 7.0	120 8.0	140 10.0	160 12.0	180 13.0	200 14.0	220 16.0	240 17.0
<b>12x8</b> <b>Ak .26</b>	cfm Throw	105 7.0	130 8.0	155 10.0	180 11.0	210 13.0	235 14.0	260 15.0	285 17.0	310 19.0
<b>14x4</b> <b>Ak .15</b>	cfm Throw	60 5.0	75 7.0	90 8.0	105 9.0	120 10.0	135 11.0	150 12.0	165 13.0	180 14.0
<b>14x6</b> <b>Ak .24</b>	cfm Throw	95 7.0	120 8.0	145 10.0	170 11.0	190 13.0	215 14.0	240 15.0	265 16.0	290 18.0
<b>14x8</b> <b>Ak .37</b>	cfm Throw	145 9.0	180 12.0	220 13.0	255 16.0	290 18.0	330 21.0	365 23.0	400 25.0	435 27.0

Terminal Velocity of 75 fpm, Pressure Loss (in H2O) & Throw (ft)



P.O. Box 1138 • WICHITA, KANSAS 67201  
(316)943-2351 • fax (316)943-2717