



INSTALLATION AND MAINTENANCE INSTRUCTIONS

TYPE "L" VENT

TYPE "L" LOW TEMPERATURE VENTING SYSTEMS

GENERAL ASSEMBLY INSTRUCTIONS
MODELS: CORR/GUARD "FCS" SIZES 3"-24"



This symbol on the nameplate means this product is listed by Underwriters Laboratories, Inc. Listing No. MH 16402

General Installation Notes

1. Metal-Fab L-Vent pipe and fittings are intended for unenclosed vertical installations only. To comply with UL listings and Metal-Fab warranty, use only vent parts defined by these instructions or Metal-Fab brochure.
2. Consult local building or fire officials about restrictions and installation inspection in your area.
3. Metal-Fab L-Vent systems are listed for gas and oil furnaces that do not exceed 570°F at the outlet temperature, and for 1700°F for a 10-minute "safety over-fire" situation. Metal-Fab L-Vent is only allowed for use with appliances requiring a negative or neutral pressure venting system.
4. For extra corrosion resistance with oil-burning equipment, vent components installed exterior to a building should include stainless cap, stainless jacketed pipe section(s) and stainless or aluminum flashings and storm collars.
5. Inspect each part for damage before installing.
6. Maintain a 3" minimum clearance to combustible construction.
NOTE: Combustible materials include: materials made of or surfaced with wood, compressed paper, plant fibers, plastics or other material that will ignite and burn. Such material is considered combustible even though flame proofed, fire retarded or plastered.
7. Type L-Vent is not listed for use with wood or coal fired appliances.
8. An increaser may be used at any point in the vent system to meet appliance manufacturers requirements.
9. Before installing, consider the design and construction of the building so as to minimize the need to pass through existing structural supports.
10. Minimum vent height is 18 feet. Maximum vent height should not exceed 60 feet. A vertical support is required at least every 30 feet.

2. As the joint further engages, align the male and female ends of the outer wall of each pipe so that they begin to engage as the pipes are further pushed together.
3. Pipe joint is fully engaged when the female end of the outer pipe comes in contact (or is at least within 3/16" 5mm) to the base of the bead on the male end of the adjoining vent pipe.
4. When possible look within the pipe assembly to verify that no sign of seal gasket is showing. Complete the joint assembly by securing the joint using #8 x 1/2" sheet metal screws (3 per joint) at each pre-punched hole on the female end of each joint.

WARNING: SHEET METAL SCREWS ARE FOR DOUBLE WALL OUTER CASING ONLY. NEVER USE SCREWS, RIVETS OR OTHER FASTENERS TO PENETRATE THE INNER FLUE WALL.

JOINT ASSEMBLY - SMALL DIAMETER 3"- 5" DIAMETER CORR/GUARD

Connections between vent and fittings are male/female type. The inner duct is sealed with an integral seal gasket and the joint is mechanically secured via the overlapping outer wall of the double wall pipe.

NOTE: When assembling 3"-5" Diameter Corr/Guard vent, always install the the female flue end elevated above the male flue end. The "UP" arrow will point to the elevated female flue end. Change of directions are made by using a male to male or female to female adapter depending on the flow of the condensate.

Joints are assembled per the following steps:

1. Before assembly, observe that the seal gasket is located within the female inner pipe joint. Locate next pipe or fitting with male inner pipe joint and insert to begin engagement of inner pipe joint.
NOTE: If the seal gasket pushes out of the groove during the assembly process, apply a light film of synthetic based lubricant to the top surface of the gasket or spray a light film of soapy water on the top surface of the gasket. Visually check that the gasket has not pushed out of the flue bead.

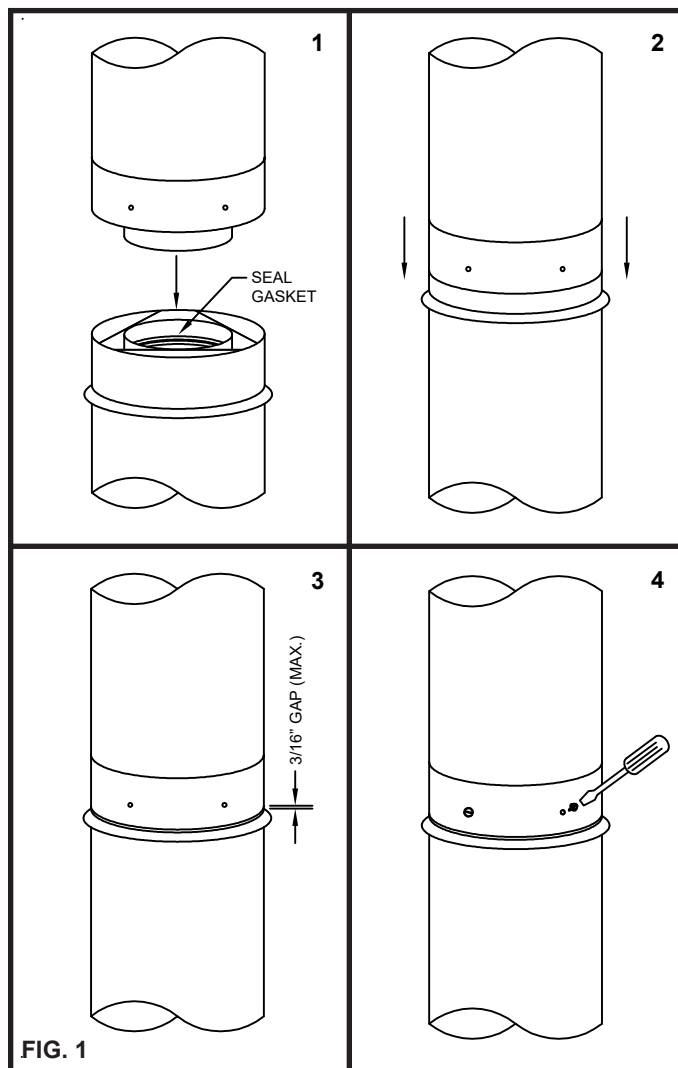


FIG. 1

**JOINT ASSEMBLY-LARGE DIAMETER
6"-36" DIAMETER FCS**

Connection Tips For Sealant Applications (See FIG. 2):

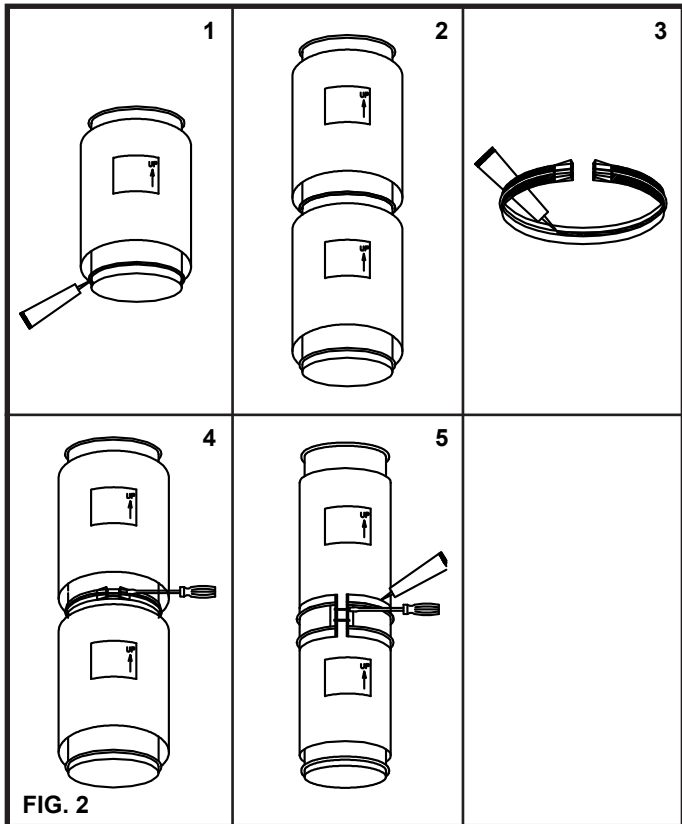
The Corr/Guard (Model FCS) joint sealing system is designed for quick and easy installation:

NOTE: When assembling 6"-36" diameter Corr/Guard vent, always install the female flue end elevated above the male flue end. Change of directions are made by using a male to male or female to female adapter depending on the flow of the condensate.

1. Inspect flanged surfaces just prior to installation, and if contaminated with oil or dirt, clean with rubbing alcohol. Apply a continuous bead of P070 or P077 sealant in the corner of the sleeve and flange.
2. Join the two flanged ends of the pipe sections, compressing the P070 or P077 sealant just applied.
3. Fill the channel of Flange Band with P070 or P077 Sealant.
4. Install the flange band around the flanges and firmly tighten (Torque: 2 ft.-lbs to 5 ft.-lbs.). **DO NOT over tighten for risk of damage to joint. DO NOT locate the fasteners of the flange band on the bottom side of vent for horizontal installations.**

IMPORTANT: Allow P070 or P077 Sealant to cure 24 hours before operating appliances.

5. Secure the outer casing with the casing closure band. Apply clear silicone sealant to closure band for exterior applications only.



STANDARD INSTALLATION (SEE FIG.3)

1. Start off with the appropriate appliance adapter. (SBA or SBAI). Continue to run L-Vent vertically through the floors and ceiling utilizing lengths of pipe. Connect vent lengths per joint assembly fig 1 and fig 2. Maintain 3" clearance to combustible construction and do not enclose the vent. A plate support must be used every 30 feet and wall band may be used to maintain clearance to combustibles. The framing requirements through floors and ceilings needs to be the vent O.D. plus 3" in both length and width of the square opening.
2. Install and secure the flashing around the vent where it exits the roof. Apply a thick ring of mastic tape or RTV around the vent pipe and then slide a storm collar down onto the mastic ring or RTV and secure.
3. Install the vent cap by securing the joints together as outlined in the joint assembly section and attach the closure ring around the base of the cap. For cleaning and inspection, the vent cap can be removed in opposite sequence noted above.
4. If multiple sections of vent pipe (over 5' for 3"-6" and 10' for 6"-24") are required above the roof, the top section should be guyed securely to the roof, in three equally spaced positions using the guy ring and wire.

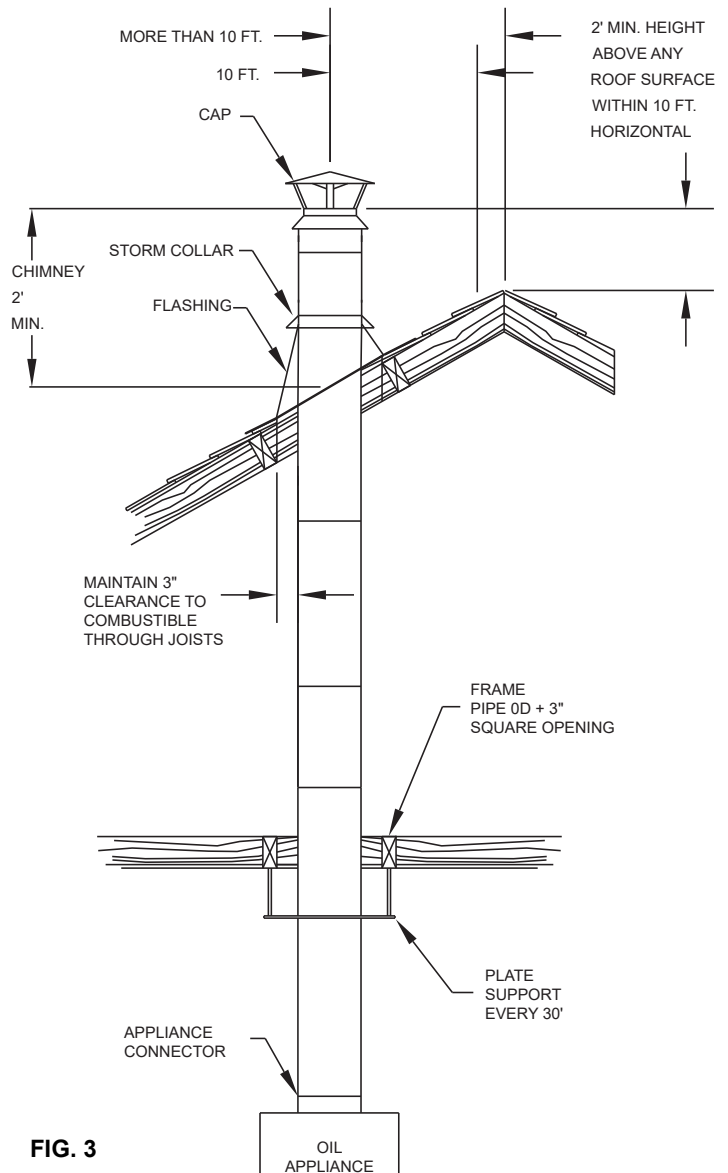


FIG. 3



P.O. Box 1138 • WICHITA, KANSAS 67201
(316) 943-2351 • FAX (316) 943-2717
info@metal-fabinc.com • www.metal-fabinc.com