



6" - 12" DIAMETER TEMP/GUARD & AIR-COOLED TEMP/GUARD ADDENDUM CHIMNEY SHROUD INSTALLATION INSTRUCTIONS



MH8251

A MAJOR CAUSE OF CHIMNEY RELATED FIRES IS FAILURE TO MAINTAIN REQUIRED CLEARANCES (AIR SPACES) TO COMBUSTIBLE MATERIALS. IT IS OF THE UTMOST IMPORTANCE THAT THIS CHIMNEY BE INSTALLED ONLY IN ACCORDANCE WITH THESE INSTRUCTIONS.

Read through all these instructions before beginning your installation. Failure to install the chimney as described in these instructions will void the manufacturer's warranty and may affect your homeowner's insurance UL listing warranty status. Refer to the Temp/Guard and Air-Cooled Temp/Guard Chimney system. Keep these instructions for future use.

APPLICATION AND LISTING

As specified in these instructions, chimney shrouds are approved for use with Temp/Guard and Air-Cooled Temp/Guard Chimney (6"-12" diameter). Chimney shrouds used with Temp/Guard (6"-8" diameter) are listed for "Type HT" 2100°F. Chimney shrouds used with Temp/Guard (10"-12" diameter) and Air-Cooled Temp/Guard (8"-12" diameter) are listed for use with appliances which have a flue temperature that does not exceed 1700°F. A chimney shroud built and installed in compliance with these instructions is UL Listed for use with Temp/Guard and Air-Cooled Temp/Guard Chimneys (Listing Number MH8251).

SHROUD REQUIREMENTS

Shrouds can either be field-fabricated or factory fabricated, but they must meet the requirements as specified in these instructions. Shrouds must be constructed of a minimum 24 gauge (.025") stainless steel, (.028) aluminized steel, (.028) galvanized steel, or (.020) copper. Other materials may also be used, such as brick, mortar, stucco, stone, etc., provided they are completely non-combustible. Check with your local building code authorities for any shroud requirements. Shrouds must be able to be removed to allow chimney access to properly clean the chimney. Temp/Guard and Air-Cooled Temp/Guard installations, which include the use of a shroud, must comply with the following requirements (**FIG. 1**)

- Temp/Guard Chimney (6"-8" diameter) requires a minimum 1-1/2" clearance to combustible framing and minimum 5" clearance to combustible wall or sheathing be maintained. Temp/Guard Chimney (10"-12" diameter) and Air-Cooled Temp/Guard Chimney (8"-12") requires a minimum 2" clearance to combustible framing and a minimum 5-1/2" clearance to combustible wall or sheathing be maintained.
- **The chase enclosure must be ventilated.**

The Chase Top Flashing or field-fabricated chase pan must be used. Field-fabricated chase pans are acceptable if they meet these requirements:

Material must be 24 gauge (.028") Galvanized steel or equivalent.

Chase pan opening should be 1/16" –1/8" larger than outside diameter of chimney pipe with 1/2" upturned flange/collar. A Storm Collar may be used and/or seal between chase pan and chimney with high temperature sealant.

Chase pan must overhang chase by 3/4" per side for proper airflow.
- Field-fabricated spacers (1" tall, 24 gauge or, 0.028" Galvanized Steel) must be used to support the Chase Top Flashing or chase pan, in order to provide airflow.
- Temp/Guard Rain Cap (TGRC) and Temp/Guard Rain Cap (ATGRC) must be used inside the shroud.
- The shroud must not be in direct contact with any of the Temp/Guard and Air-ColledTemp/Guard components (other than Chase Pan).
- All Open Areas of the shroud must be covered with 1/2" stainless or galvanized steel mesh screen to prevent debris from entering the shroud.
- Shrouds must follow the dimensional requirements specified in **TABLES 1, 2 or 3**, depending on the style of shroud used.

The three basic shroud styles are: a) House, b) Mailbox, and c) Pyramid. Most factory-fabricated shrouds will fall under one of these basic style categories.

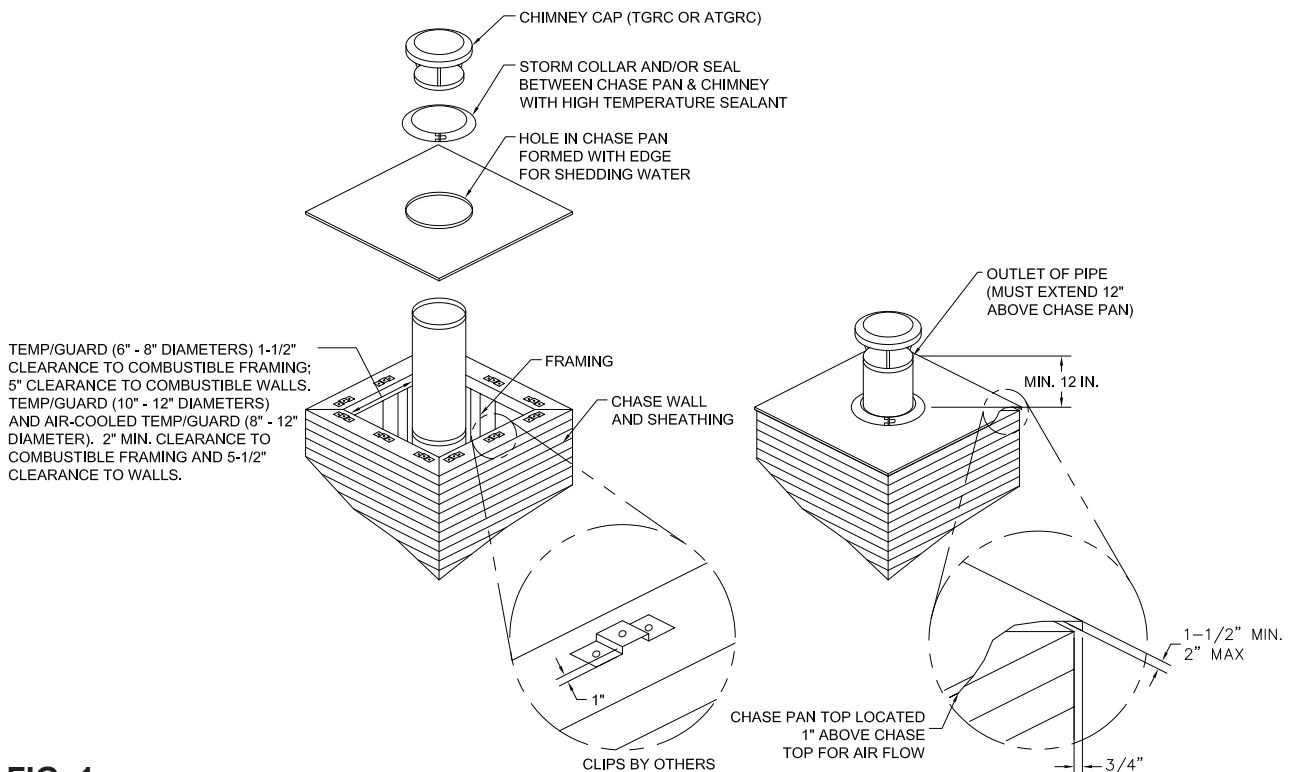


FIG. 1

MAILBOX STYLE SHROUD

The Mailbox style shroud generally has two solid sides and a solid top. The exhaust openings are on the two open ends of the shroud. (**FIG. 2**) **TABLE 1** lists the minimum shroud dimensions, depending on the diameter of the Temp/Guard and Air-Cooled Temp/Guard Chimney.

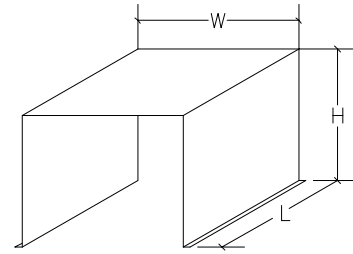
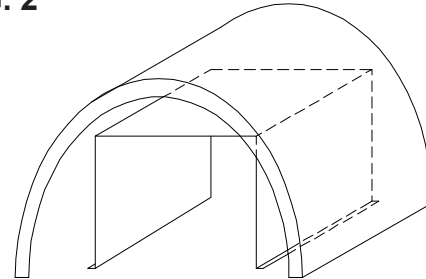


FIG. 2



INTERNAL SHROUD REPRESENTS MINIMUM DIMENSIONAL DESIGN AND OPEN AREA (FROM FIG. 2) THAT MUST BE PRESENT WHEN CONSTRUCTING SHROUD.

TABLE 1 MINIMUM DIMENSIONS

DIA.	CAP CAT NO.	H = MIN. HEIGHT	W = MIN. WIDTH	L = MIN LENGTH
6"	6TGRC	18"	20"	20"
7"	7TGRC	18"	21"	21"
8"	8TGRC/8ATGRC	18"	22"	22"
10"	10TGRC/10ATGRC	20"	24"	24"
12"	12TGRC/12ATGRC	20"	26"	26"

HOUSE STYLE SHROUD

The House style shroud is roughly square or rectangular with a closed top and exhaust openings on four (4) sides (See **FIG. 3**) **TABLE 2** lists the minimum shroud dimensions, minimum Open Area per side, minimum window open area per side, minimum base open area per side, depending on the diameter of Temp/Guard and Air-Cooled Temp/Guard Chimney.

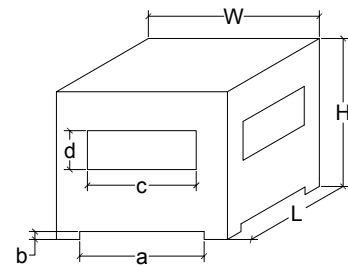
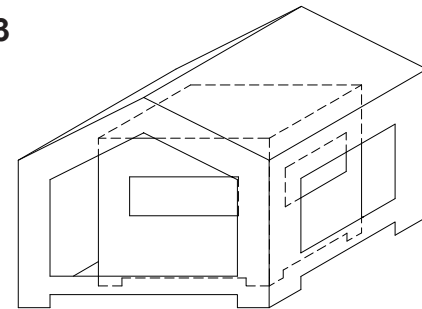


FIG. 3



INTERNAL SHROUD REPRESENTS MINIMUM DIMENSIONAL DESIGN AND OPEN AREA (FROM FIG.3) THAT MUST BE PRESENT WHEN CONSTRUCTING SHROUD.

TABLE 2 MINIMUM DIMENSIONS

DIA.	CAP CAT NO.	H = MIN. HEIGHT	W = MIN. WIDTH	L = MIN LENGTH	MIN. OPEN AREA FOR SINGLE SIDE	MIN. WINDOW OPEN AREA FOR SINGLE SIDE c x d	MIN. BASE OPEN AREA FOR SINGLE SIDE a x b
6"	6TGRC	18"	20"	20"	83 SQ. IN.	55 SQ. IN.	28 SQ. IN.
7"	7TGRC	18"	21"	21"	91 SQ. IN.	61 SQ. IN.	30 SQ. IN.
8"	8TGRC/8ATGRC	18"	22"	22"	100 SQ. IN.	67 SQ. IN.	33 SQ. IN.
10"	10TGRC/10ATGRC	20"	24"	24"	119 SQ. IN.	79 SQ. IN.	40 SQ. IN.
12"	12TGRC/12ATGRC	20"	26"	26"	144 SQ. IN.	96 SQ. IN.	48 SQ. IN.

PYRAMID STYLE SHROUD

The Pyramid style shroud is roughly square or rectangular with an open top for exhaust as well as openings along the base of the four sides (See FIG. 4). TABLE 3 lists the minimum shroud dimensions, including the minimum width and length and base opening area per side, depending on the diameter of Temp/Guard and Air-Cooled Temp/Guard Chimney.

TABLE 3 MINIMUM DIMENSIONS

DIA.	CAP CAT NO.	W = MIN. WIDTH	L = MIN LENGTH	MIN. OPEN AREA FOR SINGLE SIDE a x b
6"	6TGRC	20"	20"	45 SQ. IN.
7"	7TGRC	21"	21"	48 SQ. IN.
8"	8TGRC/8ATGRC	22"	22"	51 SQ. IN.
10"	10TGRC/10ATGRC	24"	24"	57 SQ. IN.
12"	12TGRC/12ATGRC	26"	26"	63 SQ. IN.

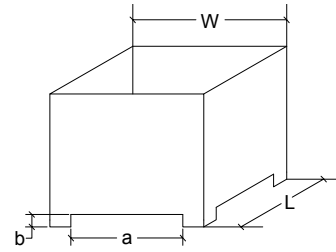
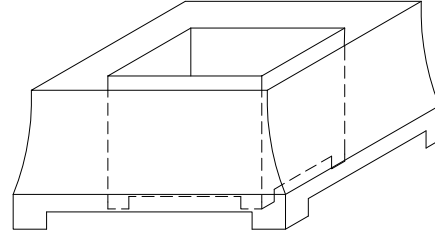


FIG. 4



INTERNAL SHROUD REPRESENTS MINIMUM DIMENSIONAL DESIGN AND OPEN AREA (FROM FIG.4) THAT MUST BE PRESENT WHEN CONSTRUCTING SHROUD.

WARRANTY

Metal-Fab Inc. makes no warranty or representation of any kind, expressed or implied, concerning the materials, quality, workmanship or installation of the third party manufactured shrouds that may be used in connection with the Temp/Guard and Air-Cooled Temp/Guard Chimney System. Metal-Fab Inc. expressly disclaims any and all liability of any kind related to the materials, quality, workmanship or installation of such third party manufactured shrouds.



P.O. Box 1138 • WICHITA, KANSAS 67201
 PHONE: 316-943-2351 • 800-835-2830
 FAX (316) 943-2717
 info@metal-fabinc.com
 www.metal-fabinc.com