



MODEL: MFRA FRAMED RETAINING ANGLES FOR UNDERWRITERS LABORATORIES FIRE DAMPER INSTALLATIONS



UL CLASSIFIED
(SEE COMPLETE
MARKING ON PRODUCT)



STANDARD CONSTRUCTION:

16 Ga. 1-1/2" x 1-1/2" formed galvanized steel with staked corners.

Sizes: Minimum 6-1/4" x 6-1/4"
Maximum 48" x 48"

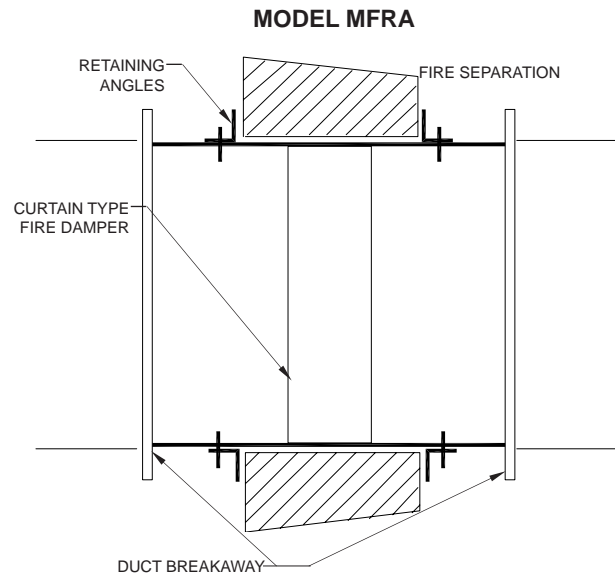
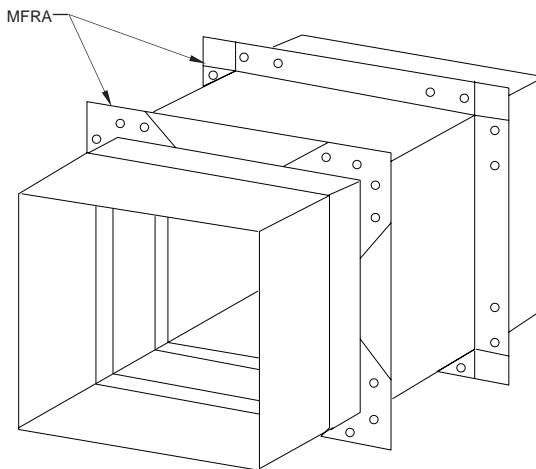
NOTE: When the damper or the damper assemblies exceed either 48" in width or height, the retaining angles shall not be less than 1-1/2" x 1-1/2" and shall be attached to the sleeve using 1/4-20 x 3/4" roundhead stove bolts at 8" on center. 1" long welds or #14 x 3/4" sheet metal screws at the same spacing.

APPLICATION:

The model MFRA retaining angles can be installed on Metal-Fab curtain fire dampers. MFRA retaining angles are shipped in sets of two.

INSTALLATION:

1. Install damper within fire separation as detailed in the appropriate damper installation instruction sheet.
2. Place the angle around the damper sleeve on both sides of the fire separation as shown below. See **SECTION 3** on fire damper installation instructions for alternate mounting instructions.
3. The retaining angles must be attached to the sleeve with #10 sheet metal screws, tack or spot welds, 1/4" bolts and nuts, or 3/16" steel pop rivets. The fasteners must be spaced 6" on centers and be a maximum of 2" from the corners. A minimum of two fasteners is required on each top, bottom or side of the damper sleeve.



**Vertical Installation Shown
Horizontal Is Similar.**

Project:
Location:
Architect:
Engineer:

Contractor:
Address:
P.O. Number:
Date: