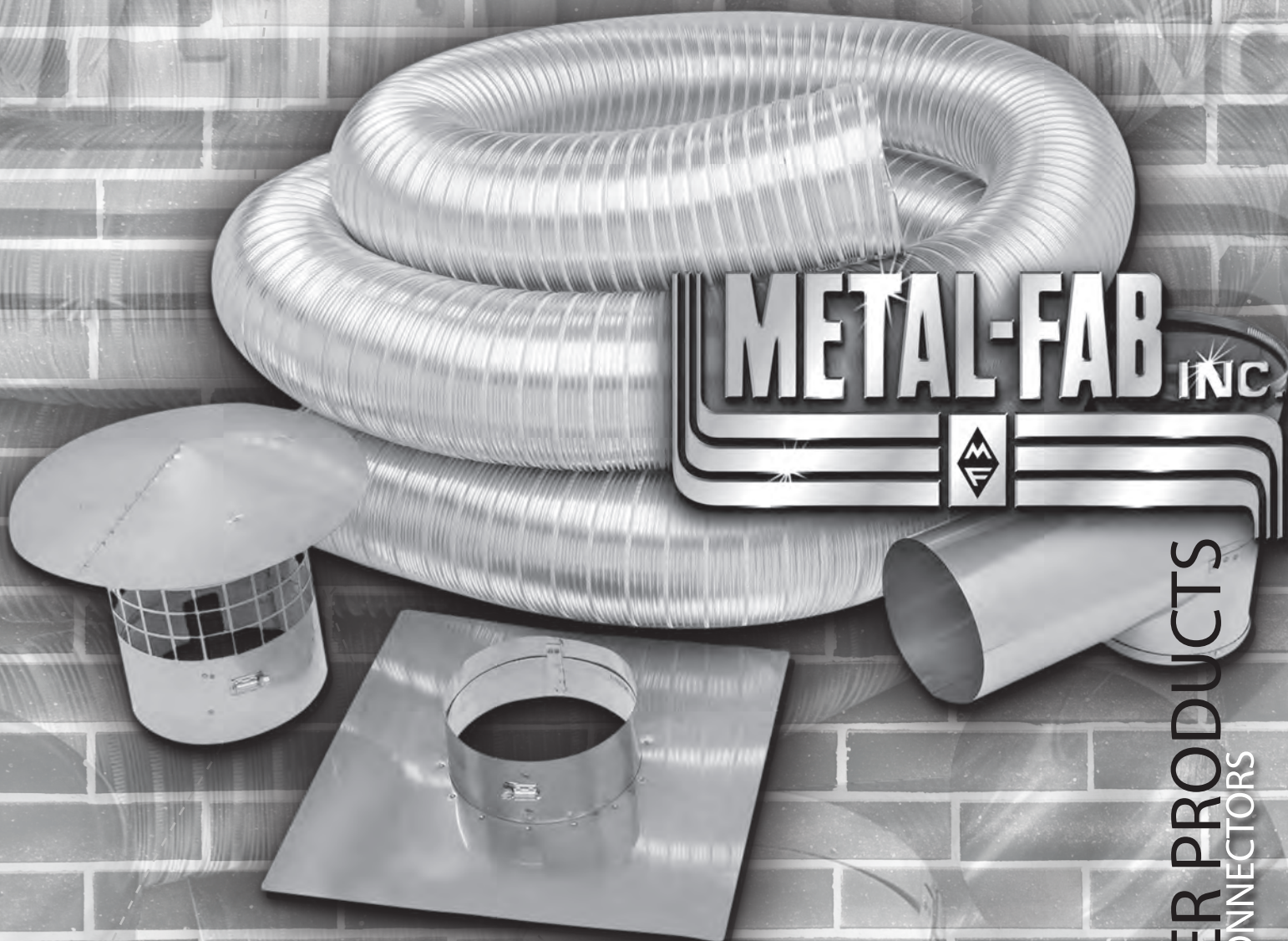


INTRODUCING

SuperFlex™ Stainless Steel Chimney Liner



METAL-FAB INC



CHIMNEY LINER PRODUCTS
FLEXIBLE LINERS AND CONNECTORS

FOR USE WITH WOOD, PELLET, COAL, OIL AND GAS-FIRED APPLIANCES.

METAL-FAB SUPERFLEX™ STAINLESS STEEL CHIMNEY LINER IS DESIGNED TO BE BETTER!

MAKE INSTALLATIONS EASIER AND FASTER

- Complete product line of individual components and vent kits
- 3" through 8" diameters, 25' and 35' lengths
- Built with tough 316L stainless steel, yet flexible enough to make tight turns
- Removable snout tee for easy assembly
- Integral one-piece collar/top plate eliminates need for storm collar
- Insulation available in handy rolls
- Components for each kit are packaged together in one carton
- Limited Lifetime Warranty

FAST SHIPPING

- Same day shipping on small orders
- One-Two day shipping on orders up to truckload
- 100% order fill - no backorders
- Automatic online order acknowledgement
- Automatic online shipping delivery notification

STAFFED TO PLEASE

- Fully staffed customer service department ready to answer your questions.
- In-house Applications Engineers available to support and answer your technical questions.
- Regional Sales Managers who assist with your sales and promotion needs.
- Local Independent Reps are available to support all of your local sales needs.

ONE-STOP SHOPPING

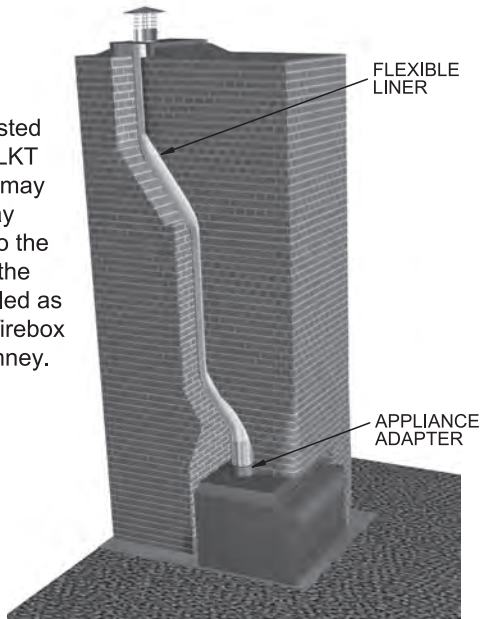
Metal-Fab offers multiple venting product lines including B-Vent, Direct Vent, All-Fuel, Pellet/Biomass, Single & Double Wall Black Pipe, CSST, Corr/Guard™, Grilles & Registers, and Dampers. You can combine any or all of these products to decrease freight costs, and our fast and full shipping means you can maintain lower inventory levels.



METAL-FAB SUPERFLEX™ OFFERS THE INSTALLING CONTRACTOR SEVERAL CHIMNEY LINER CHOICES:

OPTION 1

Metal-Fab's UL Listed Model SLKC or SLKT chimney liner kits may be used all the way from termination to the appliance, where the appliance is installed as an insert into the firebox of a masonry chimney.

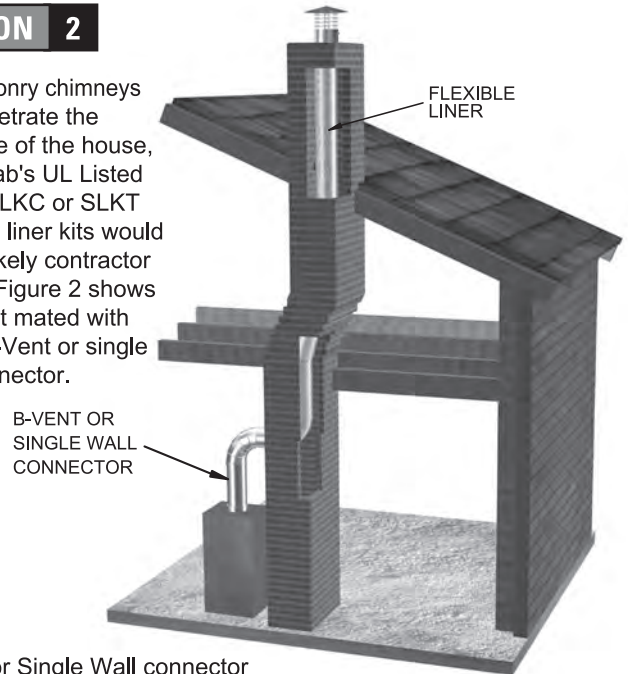


SLKC or SLKT liner used from termination to appliance (inside masonry chimney).

FIGURE 1

OPTION 2

For masonry chimneys that penetrate the envelope of the house, Metal-Fab's UL Listed Model SLKC or SLKT chimney liner kits would be the likely contractor choice. Figure 2 shows a liner kit mated with either B-Vent or single wall connector.

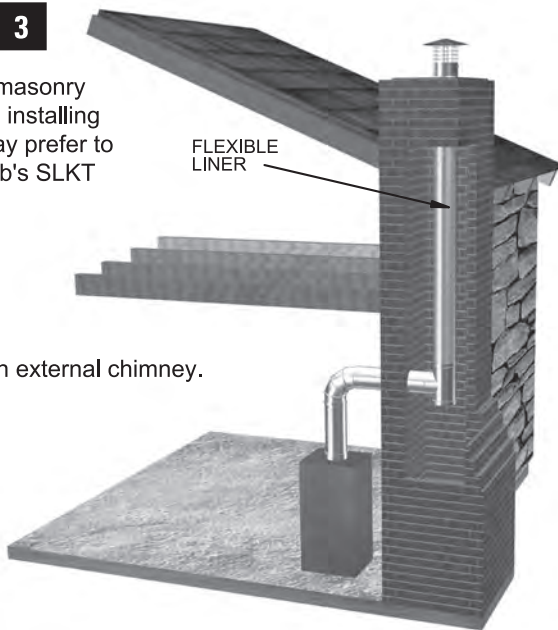


B-Vent or Single Wall connector mated with SLKC or SLKT liner.

FIGURE 2

OPTION 3

For external masonry chimneys the installing contractor may prefer to use Metal-Fab's SLKT liner kit.



SLKT used on external chimney.

FIGURE 3

OPTION 4

An Inadequately Lined Chimney

Like moisture forming on an ice-cold drinking glass, condensation forms on the inside of chimneys when the temperature of the exhaust gases falls below the dew point.

Highly corrosive chloride concentrations condense on the inside of the chimney.

Chloride concentrations erode the masonry walls, and eventually permeate through the chimney.

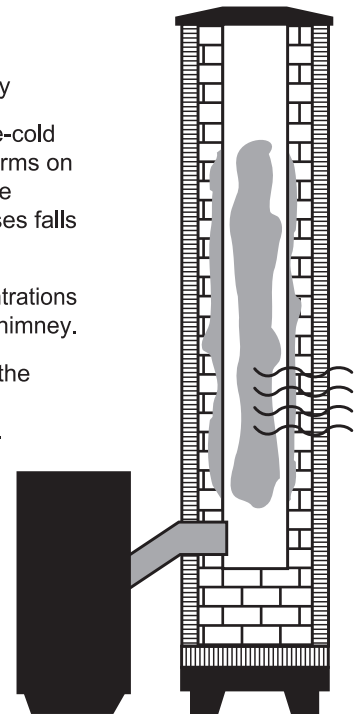


FIGURE 4



Metal-Fab Chimney Liners Are Listed By Underwriters Laboratories to UL Standard 1777.

COMPLETE STAINLESS STEEL LINER KITS HANDLE THE ENTIRE JOB

MODEL SLKC - 3" & 4"



| Kit Sizes and Identification: | |
|-------------------------------|----------|
| 3" Diameter x 25' length | SLK0325C |
| 3" Diameter x 35' length | SLK0335C |
| 4" Diameter x 25' length | SLK0425C |
| 4" Diameter x 35' length | SLK0435C |

- Kit includes:**
- Specified Length of Stainless Steel Flex
 - Vent Cap
 - Top Plate
 - Connector
 - Storm Collar
 - Instructions

MODEL SLKC - 5" - 8"



| Kit Sizes and Identification: | |
|-------------------------------|----------|
| 5" Diameter x 25' length | SLK0525C |
| 5" Diameter x 35' length | SLK0535C |
| 6" Diameter x 25' length | SLK0625C |
| 6" Diameter x 35' length | SLK0635C |
| 7" Diameter x 25' length | SLK0725C |
| 7" Diameter x 35' length | SLK0735C |
| 8" Diameter x 25' length | SLK0825C |
| 8" Diameter x 35' length | SLK0835C |

- Kit includes:**
- Specified Length of Stainless Steel Flex
 - Vent Cap
 - Top Plate
 - Connector
 - Instructions

MODEL SLKT - 3" & 4"



| Kit Sizes and Identification: | |
|-------------------------------|----------|
| 3" Diameter x 25' length | SLK0325T |
| 3" Diameter x 35' length | SLK0335T |
| 4" Diameter x 25' length | SLK0425T |
| 4" Diameter x 35' length | SLK0435T |

- Kit includes:**
- Specified Length of Stainless Steel Flex
 - Vent Cap
 - Top Plate
 - Tee
 - Storm Collar
 - Instructions

MODEL SLKT - 5" - 8"



| Kit Sizes and Identification: | |
|-------------------------------|----------|
| 5" Diameter x 25' length | SLK0525T |
| 5" Diameter x 35' length | SLK0535T |
| 6" Diameter x 25' length | SLK0625T |
| 6" Diameter x 35' length | SLK0635T |
| 7" Diameter x 25' length | SLK0725T |
| 7" Diameter x 35' length | SLK0735T |
| 8" Diameter x 25' length | SLK0825T |
| 8" Diameter x 35' length | SLK0835T |

- Kit includes:**
- Specified Length of Stainless Steel Flex
 - Vent Cap
 - Top Plate
 - Tee
 - Instructions

MODEL SLKT - 6" - 8"



| Kit Sizes and Identification: | |
|-------------------------------|-------------|
| 6" Diameter x 25' length | SLK0625DWOC |
| 6" Diameter x 35' length | SLK0635DWOC |
| 8" Diameter x 25' length | SLK0825DWOC |
| 8" Diameter x 35' length | SLK0835DWOC |

- Kit includes:**
- Specified Length of Stainless Steel Flex - Last 5' Ovalized
 - Vent Cap
 - Top Plate
 - Storm Collar
 - Doublewall Oval to Round Adapter
 - Instructions

MODEL SLK - 6" - 8"



Kit Sizes and Identification:

| | |
|--------------------------|-------------|
| 6" Diameter x 25' length | SLK0625SWOC |
| 6" Diameter x 35' length | SLK0635SWOC |
| 8" Diameter x 25' length | SLK0825SWOC |
| 8" Diameter x 35' length | SLK0835SWOC |

Kit includes:

- Specified Length of Stainless Steel Flex - Last 5' Ovalized
- Vent Cap
- Top Plate
- Storm Collar
- Singlewall Oval to Round Adapter
- Instructions

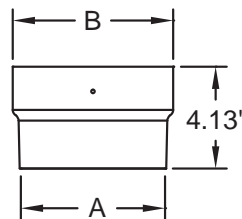
COILED FLEX SLX



Kit Sizes and Identification:

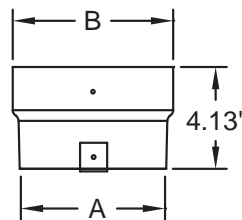
| | |
|--------------------------|---------|
| 3" Diameter x 25' length | SLX0325 |
| 3" Diameter x 35' length | SLX0335 |
| 4" Diameter x 25' length | SLX0425 |
| 4" Diameter x 35' length | SLX0435 |
| 5" Diameter x 25' length | SLX0525 |
| 5" Diameter x 35' length | SLX0535 |
| 6" Diameter x 25' length | SLX0625 |
| 6" Diameter x 35' length | SLX0635 |
| 7" Diameter x 25' length | SLX0725 |
| 7" Diameter x 35' length | SLX0735 |
| 8" Diameter x 25' length | SLX0825 |
| 8" Diameter x 35' length | SLX0835 |

FLEX CONNECTOR - STANDARD SLFC



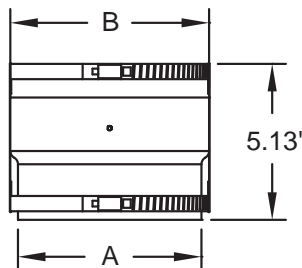
| CAT. NO. | A | B |
|----------|------|------|
| 3SLFC | 3.00 | 3.50 |
| 4SLFC | 4.00 | 4.50 |
| 5SLFC | 5.00 | 5.50 |
| 6SLFC | 6.00 | 6.50 |
| 7SLFC | 7.00 | 7.50 |
| 8SLFC | 8.00 | 8.50 |

FLEX CONNECTOR - STANDARD W/PULL BAR SLFCP



| CAT. NO. | A | B |
|----------|------|------|
| 3SLFCP | 3.00 | 3.50 |
| 4SLFCP | 4.00 | 4.50 |
| 5SLFCP | 5.00 | 5.50 |
| 6SLFCP | 6.00 | 6.50 |
| 7SLFCP | 7.00 | 7.50 |
| 8SLFCP | 8.00 | 8.50 |

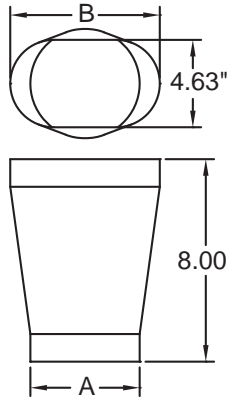
FLEX CONNECTOR - STANDARD W/CLAMP CONNECTOR SLFCC



| CAT. NO. | A | B |
|----------|------|------|
| 3SLFCC | 3.00 | 3.50 |
| 4SLFCC | 4.00 | 4.50 |
| 5SLFCC | 5.00 | 5.50 |
| 6SLFCC | 6.00 | 6.50 |
| 7SLFCC | 7.00 | 7.50 |
| 8SLFCC | 8.00 | 8.50 |

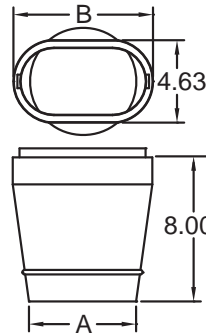
CHIMNEY LINER COMPONENTS

ROUND TO OVAL CONNECTOR SLRO



| CAT. NO. | A | B |
|----------|------|------|
| 6SLRO | 6.00 | 7.75 |

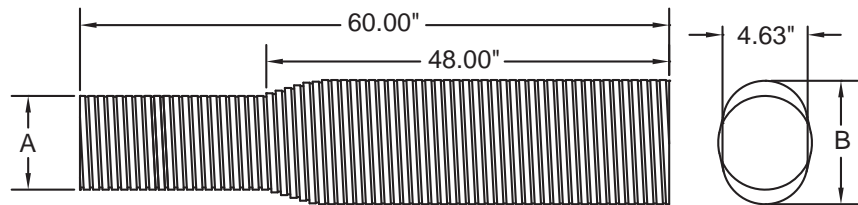
ROUND TO OVAL DOUBLEWALL CONNECTOR SLDRO



| CAT. NO. | A | B |
|----------|------|------|
| 6SLDRO | 6.00 | 7.75 |

OVAL TO ROUND SECTION - 5 FOOT SL05

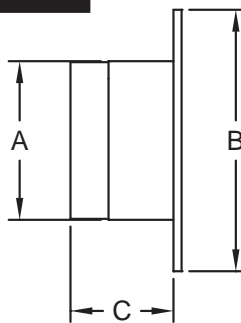
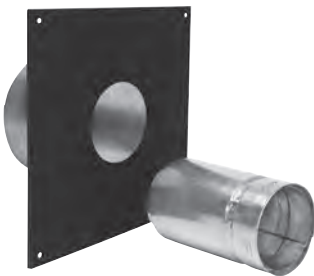
No Image Available



| CAT. NO. | A | B |
|----------|------|------|
| 6SLO5 | 6.00 | 7.75 |

L-VENT WALL PASS THRU KIT SLWTL

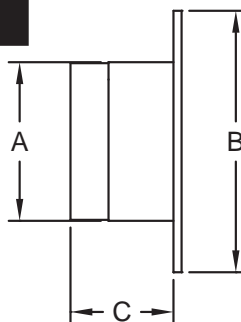
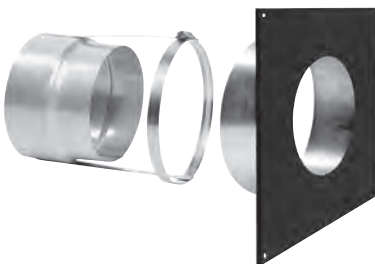
Includes L-Vent Connector & Thimble



| CAT. NO. | A | B | C |
|----------|------|-------|--------------|
| 3SLWTL | 6.13 | 13.00 | 5.00 TO 9.50 |
| 4SLWTL | 7.13 | 13.00 | 5.00 TO 9.50 |
| 5SLWTL | 8.13 | 13.00 | 5.00 TO 9.50 |
| 6SLWTL | 9.13 | 13.00 | 5.00 TO 9.50 |

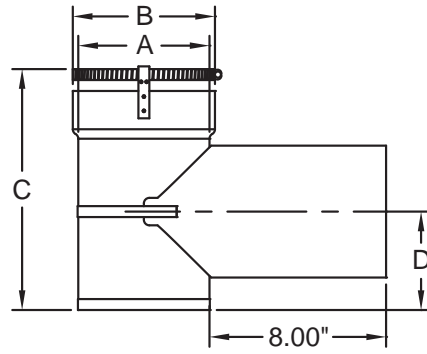
TG WALL PASS THRU KIT SLWTG

Includes TG connector & Thimble



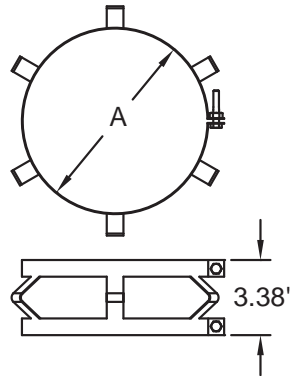
| CAT. NO. | A | B | C |
|----------|-------|-------|--------------|
| 6SLWTG | 12.88 | 17.00 | 4.00 TO 7.50 |
| 7SLWTG | 13.88 | 18.00 | 4.00 TO 7.50 |
| 8SLWTG | 14.88 | 19.00 | 4.00 TO 7.50 |

TEE SLT



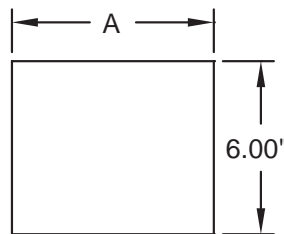
| CAT. NO. | A | B | C | D |
|----------|------|------|-------|------|
| 3SLT | 3.00 | 3.50 | 9.13 | 3.25 |
| 4SLT | 4.00 | 4.50 | 10.13 | 3.75 |
| 5SLT | 5.00 | 5.50 | 11.13 | 4.25 |
| 6SLT | 6.00 | 6.50 | 12.13 | 4.75 |
| 7SLT | 7.00 | 7.50 | 13.13 | 5.25 |
| 8SLT | 8.00 | 8.50 | 14.13 | 5.75 |

SPACER SLS



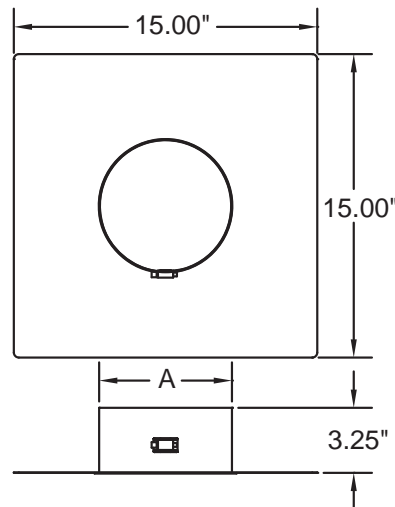
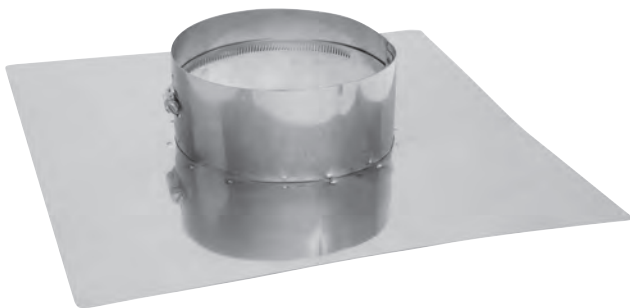
| CAT. NO. | A |
|----------|------|
| 3SLS | 3.31 |
| 4SLS | 4.31 |
| 5SLS | 5.31 |
| 6SLS | 6.31 |
| 7SLS | 7.31 |
| 8SLS | 8.31 |

MORTAR SLEEVE SLMS



| CAT. NO. | A |
|----------|------|
| 3SLMS | 4.00 |
| 4SLMS | 5.00 |
| 5SLMS | 6.00 |
| 6SLMS | 7.00 |
| 7SLMS | 8.00 |
| 8SLMS | 9.00 |

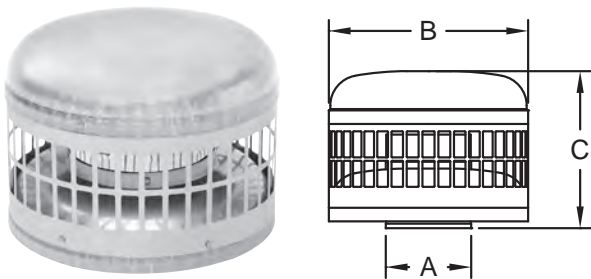
TOP PLATE SLTP



| CAT. NO. | A |
|----------|------|
| 3SLTP | 3.50 |
| 4SLTP | 4.50 |
| 5SLTP | 5.50 |
| 6SLTP | 6.50 |
| 7SLTP | 7.50 |
| 8SLTP | 8.50 |

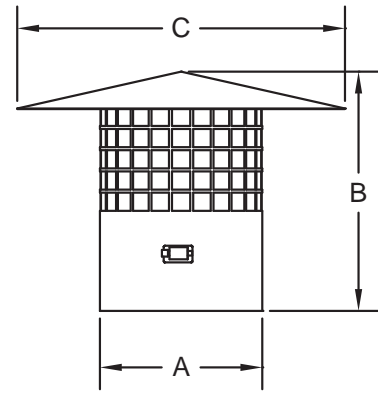
CHIMNEY LINER COMPONENTS

CAP PRC



| CAT. NO. | A | B | C |
|----------|------|------|------|
| 3PRC | 3.00 | 8.25 | 6.75 |
| 4PRC | 4.00 | 8.25 | 6.75 |

CAP SLC



| CAT. NO. | A | B | C |
|----------|------|-------|-------|
| 5SLC | 6.00 | 9.75 | 12.50 |
| 6SLC | 7.00 | 9.75 | 13.50 |
| 7SLC | 8.00 | 10.00 | 14.50 |
| 8SLC | 9.00 | 10.00 | 15.50 |

INSUALTION SLI



MESH SLM



FOIL TAPE SLTAPE

50 yards x 3" width



INSULATION ADHESIVE SLIA

Super 77



LINER CLEARANCES

1. Clearance from single-wall connectors to combustible material shall be in accordance with NPFA 211 as shown in the table below.

| APPLIANCE | MINIMUM CLEARANCE |
|--|-------------------|
| Gas appliances without draft hoods | 18 inches |
| Oil and solid fuel appliances | 18 inches |
| Unlisted gas appliance with draft hoods | 9 inches |
| Oil appliances listed for use with L-Vent | 9 inches |
| Boilers and furnaces equipped with listed gas burners and with draft hoods | 9 inches |
| Listed gas appliances with draft hoods | 6 inches |

NOTES:

- These clearances apply unless a different clearance is specified by the appliance manufacturer.
- These clearances do not apply if a listed wall penetration system is used.

2. Clearance between flex liner and masonry and between masonry and combustibles is as shown in the following table.

| FUEL BURNED | MIN. CLEARANCE LINER TO MASONRY | MIN. CLEARANCE MASONRY TO COMBUSTIBLES | INSULATION REQUIRED |
|-----------------|---------------------------------|--|---------------------|
| Gas/LP | 0 inch | 0 inch | No |
| Solid Fuel, Oil | 1 inch | 1 inch | No |
| Solid Fuel, Oil | 0 inch | 0 inch | Yes |



800-835-2830