



# MODEL: MCCD CURTAIN CEILING RADIATION DAMPER SQUARE AND RECTANGULAR



UL CLASSIFIED  
(SEE COMPLETE  
MARKING ON PRODUCT)



**MODEL MCCD:** UL 555C Listed for 3-4 hours. (ULC - S112.2)  
Square or rectangular damper with quilted ceramic thermal blanket, (non-asbestos).

**STANDARD CONSTRUCTION:**

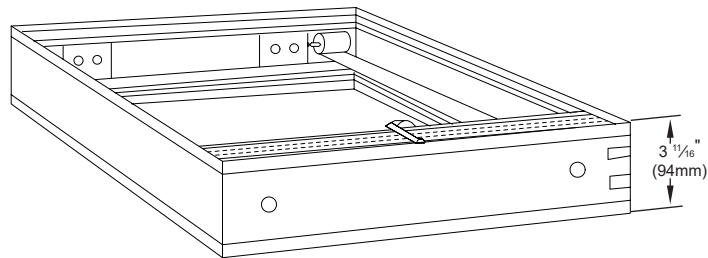
Frame: Roll formed, 22 Ga. galvanized steel.  
Blades: Roll formed, 24 Ga. galvanized steel.  
Thermal Blanket: Non-asbestos, ceramic blanket.  
Springs: Stainless steel.  
Finish: Mill galvanized.

**OPTIONS:**

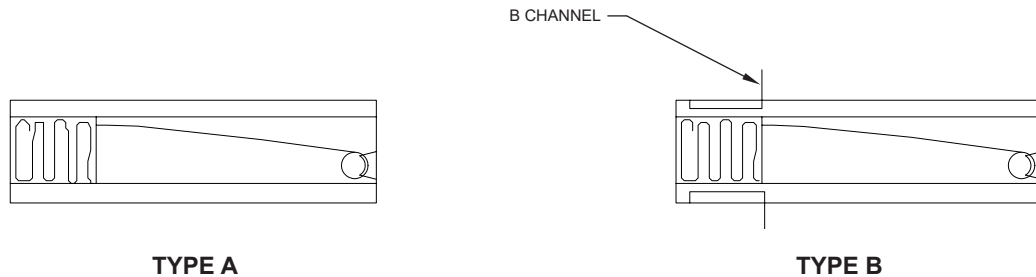
Fusible Link: Replaceable 165°F, 212°F.  
Thermal Blanket: TB5000 24" x 24" x 1/8", non-asbestos, ceramic blanket.  
Sleeve: 8" tall  
Type B: B channels installed (see below).

**SIZE LIMITATIONS:**

Minimum: 4.00" W or 4.25" H.  
Minimum area: 24 sq. inch (nominal).  
Maximum 23.75" W x 23.75" H



**MODELS**



**SUGGESTED SPECIFICATION**

Square and rectangular curtain ceiling dampers shall be Model MCCD by Metal-Fab. Ceiling dampers shall bear the Underwriters' Laboratories label and be rated for ducted (MCCD) air systems. Ceiling damper blanket shall be of the non-asbestos, curtain type for maximum free area. Ceiling damper shall be furnished with a fusible link.

Project: Contractor:  
Location: Address:  
Architect: P.O. Number:  
Engineer: Date: