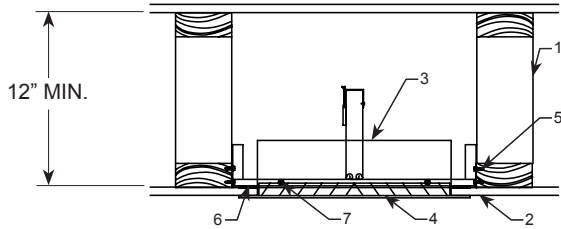


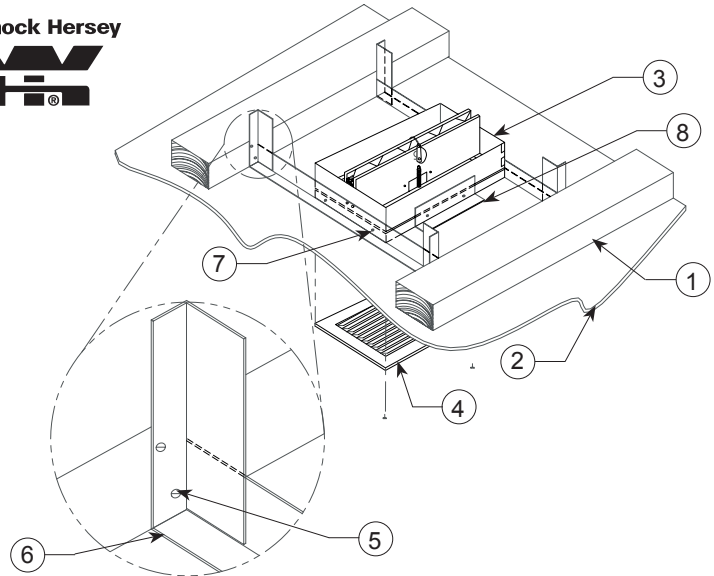


# INSTALLATION INSTRUCTION SUPPLEMENT MODELS MRCD MSCD & MCCD GYPSUM BOARD/WOOD TRUSS INSTALLATION

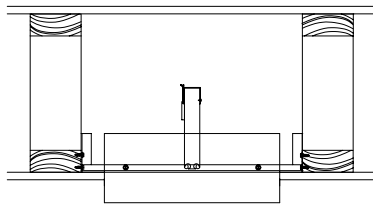


**ITEM DESCRIPTION**

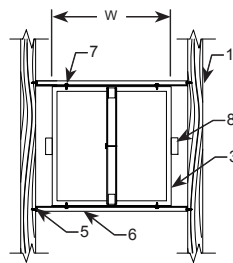
- 1 Wood Frame Member or Joist
- 2 Gypsum Board
- 3 Damper - UL555C
- 4 Grille
- 5 6 Penny Nail or #8 Screw
- 6 1" X 1/2" X 20 Ga. Mounting Angle (Minimum)
- 7 #8 Screw (Minimum)
- 8 1" X 1/2" X 20 Ga. Mounting Angle 3" Long



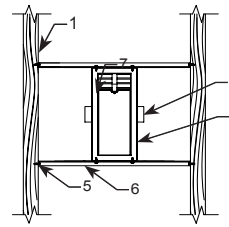
**DETAIL VIEW**



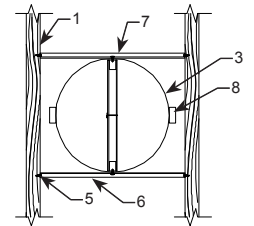
Damper With Extension Sleeve



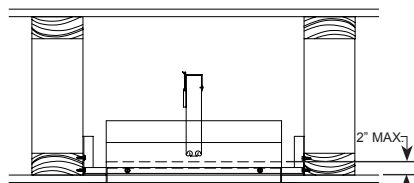
Top View MSCD  
Max. Size 196 sq. in.  
(W = 14-in. max.)



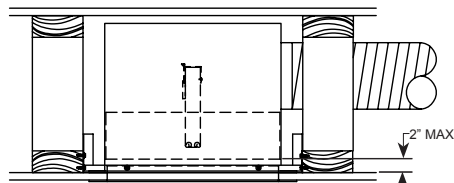
Top View MCCD  
Max Size 80 sq. in.



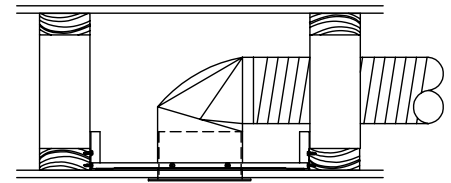
Top View MRCD  
14-in. max. diameter



Damper/Sleeve Extension  
Allows Clearance Fit For Register



Damper With Transition Box  
(L521, L546, P522 Assembly)



Damper With Transition Boot

**NOTE:** 30 gauge steel or thicker recommended for Transition Box or Boot.

**INSTALLATION:**

- A. Measure spacing between framing members and cut the mounting angle (two required) to that length plus 6 inches. Cut the 1 inch side of each mounting angle approximately 3 inches from each end of the mounting angle and bend angle up 90° at both ends as shown in detailed view above. Attach angles to wood frame with minimum of two each #6 penny nails or #8 screws.
- B. Attach the ceiling damper (or metal surrounds such as sleeve, transition box or boot) to the mounting angles using screws or rivets. A minimum of 2 fasteners per mounting angle is required for rectangular dampers. A minimum of one fastener is required for round dampers.
- C. On the sides adjacent to the retaining angles, a 3-inch long mounting angle is required. A minimum of two fasteners is required to attach the mounting angles to damper. Bottom leg of mounting angle should rest on the ceiling material.

**! IMPORTANT: FASTENERS USED TO ATTACH MOUNTING ANGLES TO DAMPER SHALL NOT INTERFERE WITH DAMPER BLADE MOTION.**

- D. If damper has an adjustable volume control, the 2 fuse links (shipped loose with damper) must be installed on damper for proper operation.
- E. Cycle damper after installation is completed.